

Control the air conditioner with a smart speaker

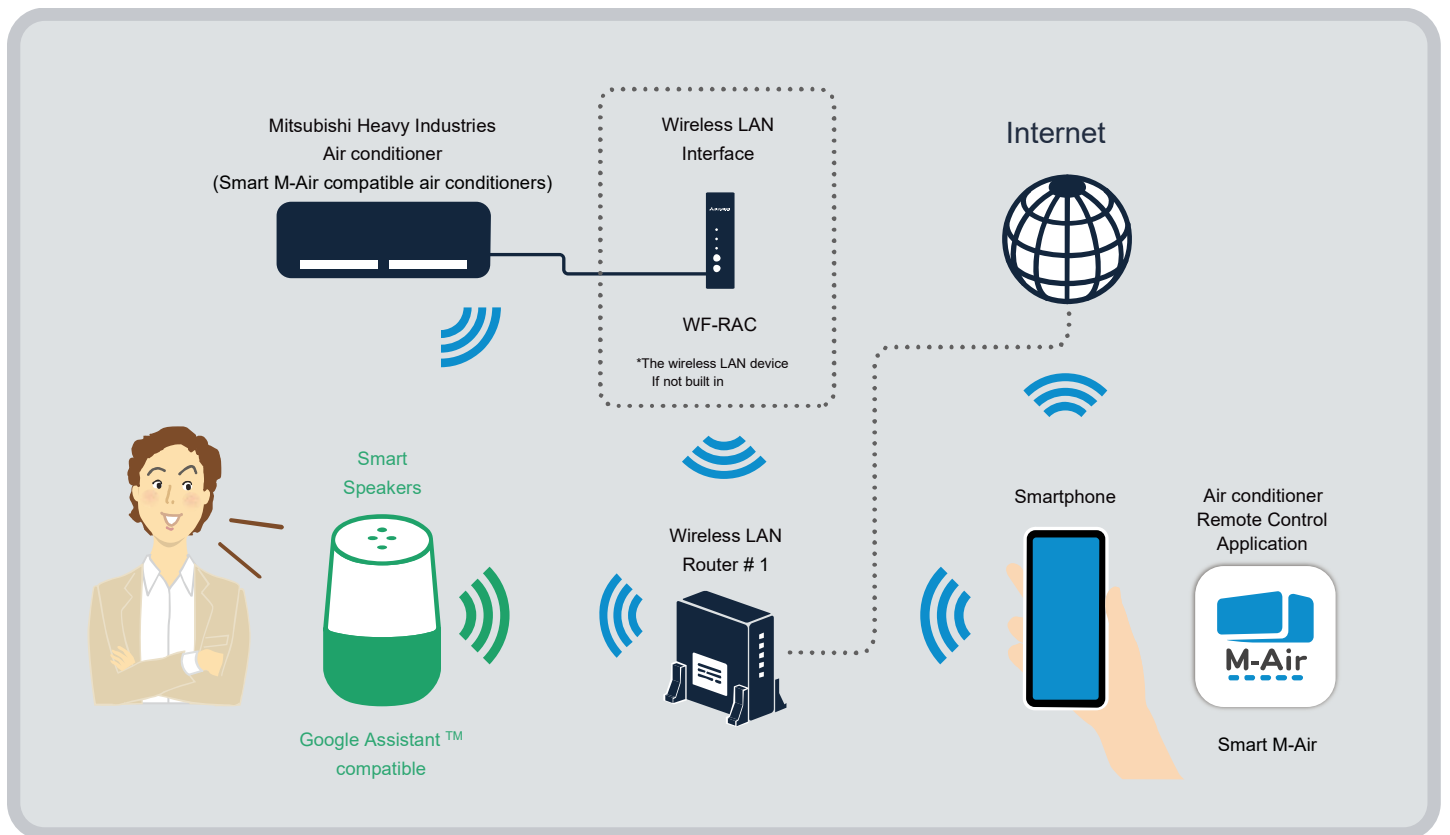
- Setting Guide -

For Google Assistant™

Smart Speaker Edition



- Environment to be prepared -



*1 •Wireless standards: IEEE 802.11 b/g/n, 2.4 GHz •Channels: 1 ~ 13 •Encryption methods: WPA-PSK (TKIP), WPA-PSK (AES), WPA2-PSK (TKIP), WPA2-PSK (AES)

*Not compatible with 5GHz. *Operation with a mobile Wi-Fi router is not guaranteed.

Precautions for Use

- "Smart M-Air-compatible air conditioner and optional wireless LAN interface (WF-RAC)" or "Air conditioner with built-in wireless LAN function" is required.
- Wireless LAN interface WF-RAC needs to be installed in air conditioners. Consult your dealer or a specialist.
- Check the application stores for the latest version of Smart M-Air.

How to check the Smart M-Air smartphone application

For Android

1. Open [Google Play]
2. Search for [Smart M-Air]

For iOS (iPhone)

1. Open the [App Store]
2. Search for [Smart M-Air]

- Before using the WF-RAC wireless LAN interface, be sure to refer to the "Safety precautions" section of the interface instruction manual.
https://www.mhi-mth.co.jp/en/products/pdf/rkz012a106b_english.pdf
- Be sure to operate the air conditioner by voice from inside your home where the registered air conditioner is installed.
- Check the condition of the air conditioner, its surroundings and people in the room before operating it.
- Make sure that the smart speaker is installed in an appropriate location so that it does not mistakenly react to ambient noise, pet sounds, etc. If such an error occurs when you are outside the house, take measures such as turning off the voice recognition function of the smart speaker.
- If the communication environment is unstable or the smart speaker mishears a voice command due to ambient noise, the air conditioner may operate unintentionally.
- When using voice commands, make sure that the operation result spoken by the smart speaker is as intended, and check the operating status of the air conditioner after the operation.
- After changing the operating mode or set temperature from the remote control or Smart M-Air smartphone application, you need to acquire the current status if you want to apply it to the smart speaker.
- Smart speakers and the Smart M-Air smartphone application can not be operated simultaneously. Wait a while (up to one minute) before operating.
- If you decide to dispose of your smart speaker or change users, be sure to disable the Google action for Smart M-Air.
- In the Google Home application, the air conditioner is registered as a "thermostat."
- Operations from the Google Assistant application and the Google Home application are not guaranteed. Use the Smart M-Air application to operate the air conditioner from your smartphone.

- Preparation (1) -

[Smart M-Air] settings

Air conditioner remote control application

1

Install Smart M-Air, an air conditioner remote control application, on your smartphone.

*See the instruction manual for details.
https://www.mhi-mth.co.jp/en/products/pdf/rkz012a106b_english.pdf



Install



Smart M-Air

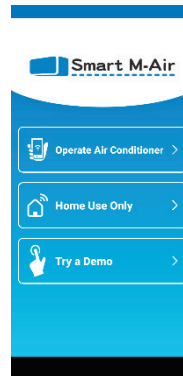
2

On the Smart M-Air startup screen, tap "Control the air conditioner (remote control mode)." Follow the on-screen instructions to create an account.

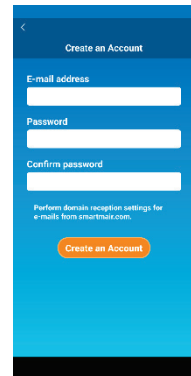
*For details, see the operation manual.
[https://www.mhi-mth.co.jp/en/products/pdf/Smart_M-Air_AppManual-English\(EEA,UK\).pdf](https://www.mhi-mth.co.jp/en/products/pdf/Smart_M-Air_AppManual-English(EEA,UK).pdf)



Smart M-Air Startup screen



Account Creation screen



... PLEASE PREPARE...



E-mail address and Password

in your Smart M-Air account for the application

If you forget your password: Please reset it in the application

Your registered e-mail address and password are needed it to connect a smart speaker.

3

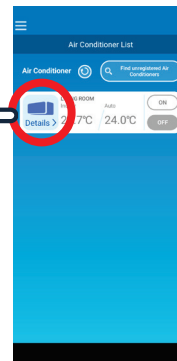
Register your air conditioner and make sure you can operate it from the Smart M-Air application.

*Confirmation Example. Tap ON or OFF on the air conditioner list screen to confirm that the air conditioner will run or stop.

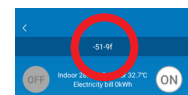
Tap "Details" to display the air conditioner detail screen. Press and hold (1 second) the air conditioner name to change it to a name that is easier to call out. (The figure shows an example of changing it to "LIVING ROOM")



Air conditioner List screen



Air conditioner Details screen



Before the change



After the change

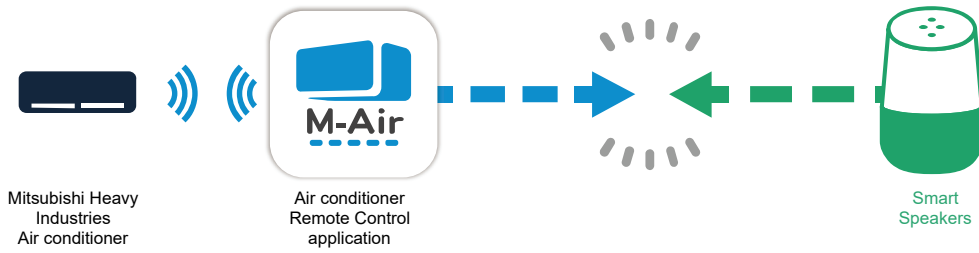
- Preparation (2) -

Smart speaker settings

Perform the initial setup for your Google Assistant™ compatible smart speaker. Make sure you can control your smart speaker with the Google Home application. (For details, refer to the instruction manual of the smart speaker.)

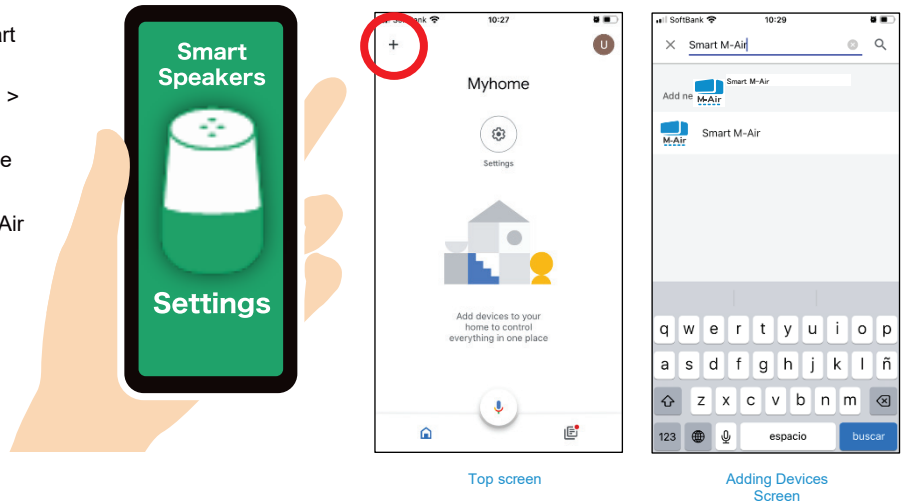


Link Smart M-Air and your smart speaker

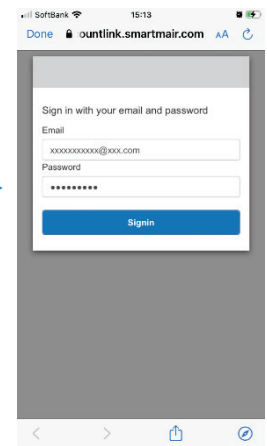
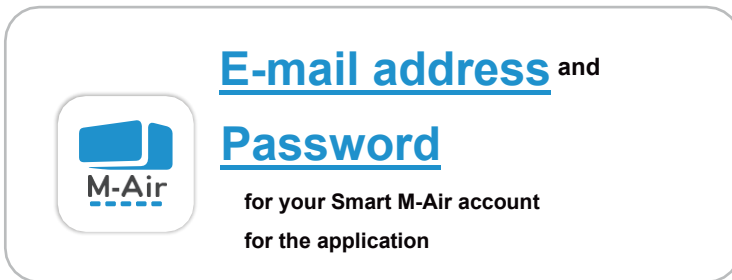


1. Enable Smart M-Air in the smart speaker settings application

1. Open the Google Home application on your smart speaker on your phone.
2. From the top screen, select "+" > "Device setup" > "Connect with Google."
3. The search button brings up the additional device screen.
4. Search for Smart M-Air - > Enable the Smart M-Air action.



2. Enter your email address and password



3. Link Complete



How to use voice commands

Voice command examples

OK Google,
Turn on the "LIVING ROOM"



OK Google,
Turn off the "LIVING ROOM"



OK Google,
Turn down the temperature
in the "LIVING ROOM"



1. Air conditioner ON/OFF
2. Changing operating mode (auto/cool/heat/fan/dry)
3. Change set temperature
4. Checking operating condition of air conditioner
5. Synchronize(*) air conditioner, etc.

* Air-conditioners added or removed by the Smart M-Air smartphone application can now be used on smart speaker.

*Support function may be expanded in the future. For the latest support, go to the Smart M-Air action overview page in the Smart Speaker Settings application.

*An example of voice command is when you set the air conditioner name to "LIVING ROOM" in the "Smart M-Air" smartphone application or the smart speaker setting application. Replace " " with the name of the air conditioner you set.

Air conditioner operation	Voice command
Start operation (Stop)	OK Google, turn on the "LIVING ROOM" (turn off)
Turn on cooling (Turn on heating)	OK Google, set the "LIVING ROOM" to cool (to heat)
Increase the temperature by 2 degrees Celsius (Lower)	OK Google, turn up the temperature in the "LIVING ROOM" by 2 degrees (turn down)
Set temperature to 24 degrees Celsius	OK Google, turn the "LIVING ROOM" to 24 degrees
Set the operating mode to cool and set temperature to 25 degrees Celsius.	OK Google, set the cool on the "LIVING ROOM" to 25 degrees
Respond with the operating mode	OK Google, tell me the "LIVING ROOM" mode.

Air conditioner operation	Voice command
Respond with the set temperature	OK Google, tell me the "LIVING ROOM" set temperature
Respond with the ON/OFF status	OK Google, is the "LIVING ROOM" on?
Respond with the room temperature	OK Google, tell me the "LIVING ROOM" temperature
Synchronize added air conditioners	OK Google, sync device

- When voice control is not available -

- * The Smart M-Air smartphone application must be set to remote control mode. Change to “Operate Air Conditioner” and try again.
- * After activating an action in the Google Home application, if you use the Smart M-Air smartphone application to initialize your account or change to “Home Use Only” mode, you will need to disable and re-activate the action in the Google Home application.
- * When you use voice commands, use the air conditioner name set in the Smart M-Air smartphone application or the smart speaker setup application.
- * When changing the set temperature, refrain from using voice commands and mentioning a decimal point because the voice recognition rate for doing so is low. "Example: OK Google, turn up the temperature in the "LIVING ROOM" by 2.5 degrees"
- * The temperature can be set between 18 and 30 degrees Celsius.
- * When the set temperature is changed, if the commanded temperature is not between 18 and 30 degrees Celsius, it is interpreted as the closest value between 18 and 30 degrees Celsius.
- * Multiple air conditioners cannot be operated at the same time.
- * If the smart speaker does not respond to a voice command, make sure the microphone switch on the top of the smart speaker is not set to OFF.
- * Regarding voice commands, the specifications are as of August 2022. The voice command examples may change due to the upgrade of the smart speaker.

MITSUBISHI HEAVY INDUSTRIES THERMAL SYSTEMS, LTD.

2-3, Marunouchi 3-chome, Chiyoda-ku, Tokyo, 100-8332, Japan
<http://www.mhi-mth.co.jp/en/>

MITSUBISHI HEAVY INDUSTRIES AIR-CONDITIONING EUROPE, LTD.

5 The Square, Stockley Park, Uxbridge, Middlesex, UB11 1ET, United Kingdom
Tel : +44-333-207-4072
Fax: +44-333-207-4089
<http://www.mhiae.com/>

MHIAE SERVICES B.V.

(Wholly-owned subsidiary of MITSUBISHI HEAVY INDUSTRIES AIR-CONDITIONING EUROPE, LTD.)
Herikerbergweg 238, Luna ArenA, 1101 CM Amsterdam, Netherlands
P.O.Box 23393 1100 DW Amsterdam, Netherlands
Tel : +31-20-406-4535
<http://www.mhiaeservices.com/>

MITSUBISHI HEAVY INDUSTRIES AIR-CONDITIONERS AUSTRALIA, PTY. LTD.

Block E, 391 Park Road, Regents Park, NSW, 2143 PO BOX 3167, Regents Park, NSW, 2143
Tel : +61-2-8774-7500
Fax: +61-2-8774-7501
<https://www.mhiaa.com.au>